

**The Course will concentrate on a single missing tooth site in the maxillae needing augmentation prior to implant placement.**

A 3.5 hour didactic lecture, followed by a 2.5 hour hands-on course, which includes, anatomically correct models with soft tissue.

The students will perform the incision, flap, site preparation, block preparation, block fixation and pericardial membrane placement followed by the incision closure.

Each student will be provided a drill motor to use (these will be shared). Proper tools, instruments, "actual" block and membranes, screw kit with the appropriate screws and sutures that would be used in an actual surgery.

The only things students will need are their own glasses and a light source.

**During this lunch hour there is a one hour lecture presentation. It is on the history of surgical asepsis and how to set up an operatory in a dental office for an aseptic surgical procedure.**

**(This includes a 15 minute video, I have made of one of my staff and myself setting up an operatory for an aseptic surgical procedure).**

**PACE CERTIFICATION PENDING**

**"A Predictable method and materials for Block Grafting of an atrophic site. A block allograft with proven success and methodology (surgery) that is achievable in your office will be taught to you with a lecture and hands-on, and finally, in an affordable course."**

**Date:** November 8<sup>TH</sup>, 2019

**Time:** 9 am - 4 pm

**LOCATION:** Rocky Mountain Tissue Bank  
2993 S. Peoria St., Suite 390  
Aurora CO. 80014

[Fly into Denver International Airport..]

**COST:** \$700 (\$800 after October 9<sup>th</sup>)  
(No refunds after November 1<sup>st</sup>, 2019)

**MAKE A CHECK TO :** AAID Lake Superior  
Study Club

**Mail a check to:** David Resnick  
1848 State Hwy 32, Twin Valley, MN. 56584



Sponsored by  
**Rocky Mountain  
Tissue Bank**

**If you have any questions on this course, please contact:  
Dr. David Resnick, at his office in Minnesota:**

**Phone:** 1-218-784-7119  
**E-mail:** ddz@arvig.net

### **Nearby Hotels**

**Radisson:**

1-800-333-3333 +1 (720) 857-9000

3155 S. Vaughn Way, Aurora Colorado 80014

**Doubletree:**

(303) 337-2800

13696 E. Iliff Place, Aurora Colorado 80014

**Marriott:**

(303) 745-6700

13851 E. Harvard Ave. Aurora Colorado 80014



## **"HOW TO DO IRRADIATED BLOCK ALLOGRAFTS TO AUGMENT DEFICIENT RIDGES"**

### **A HANDS-ON COURSE**

**NOVEMBER 8<sup>TH</sup>, 2019  
DENVER COLORADO**

**This course is limited to  
20 attendees.**

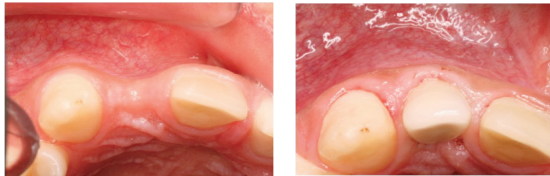
At the end of the course, each participant will receive a thumb drive of Dr. Resnick's Didactic portion of the presentation

Approximately 700 slides.

The improvement to the ridge contour is evident and predictable with these techniques and materials.

Pre Block Grafting

The Crown has now been placed

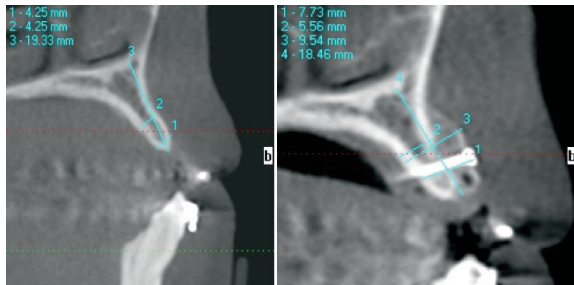


Dr. David Resnick, DDS ©

The I-Cat scan shows the significant increase in the ridge width.

Pre surgical block placement 01-29-10

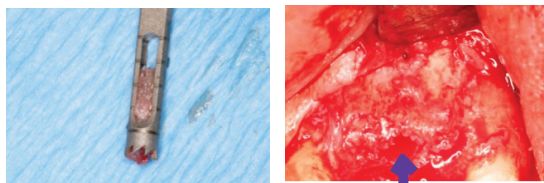
Five Month Post Block Placement 07-19-10



Core biopsy/Biopsy site (Clearly in graft area, it became the implant site.) 07-19-10

Core Biopsy site- (Clearly in Graft area it became the osteotomy site)

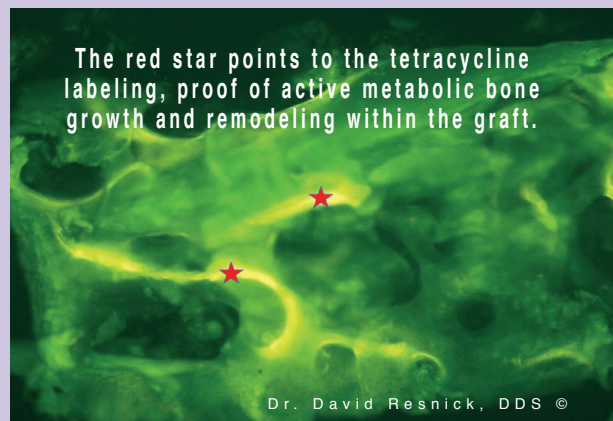
Core Biopsy



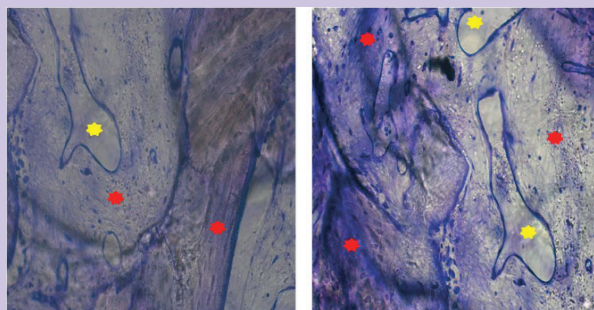
Dr. David Resnick, DDS ©

To verify active, metabolic bone remodeling and turnover a regimen of Tetracycline and Declomycin was administered. The protocol for this is:

1. Tetracycline 250mg tid/3days. Starting 25 days prior to bone biopsy.
2. Declomycin 300mg/3days. Starting 11 days after the Tetracycline is done.

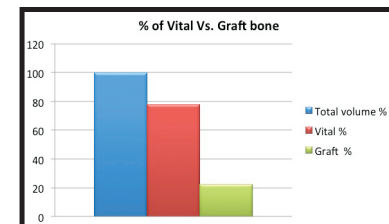


Dr. David Resnick, DDS ©



The red star points to areas of vital bone with osteocytes and lacunae & the yellow star points to areas of non-vital bone.

Total Volume %	Vital %	Graft %
100	77.76	22.24



## Learning Objectives:

1. Diagnosing the need to augment a ridge. What is the criteria?
2. A review of the different methods to do a ridge augmentation.
3. Medication Protocols pre and post op, including antibiotics, steroids, mouth rinses and pain meds.
4. Incision and flap designs for a variety of missing teeth.
5. Why use irradiated blocks of vertebral origin and irradiated particulate allografts of vertebral origin.
6. Why and how to use pericardium allograft for the membrane covering the block.
7. How to prepare the recipient site.
8. How to prepare the block and affix the block with a screw(s).
9. The appropriate suture to use and how to close the flap.
10. When is the grafted site ready for implant placement.
11. Understand the importance of asepsis.
12. How to set up an aseptic field for grafting and implant surgery.

Dr. Resnick has done numerous biopsies of the matured grafted sites and these will be presented in this lecture. Above and to the left is one of the cases that he will present.